



# EIT ICT Labs Master School

**Aino Lyytikäinen**

Master School coordinator

Aalto University / EIT ICT Labs Helsinki

# What is EIT ICT Labs?



**Education**



Creating a new breed of entrepreneurs

EIT Master Schools



**Research**



Enabling excellent individuals and multidisciplinary teams to develop breakthrough Ideas

Schools & Camps

**Education Research**

Experience Labs & Living Labs



Test Beds & Simulation Tools

Co-location Center

**Business**

Cross-Sectoral Mobility



Innovation Radar



Supporting innovators all the way to the market

**Business**

**Mission:**  
**To drive European leadership in ICT innovation for economic growth and quality of life**

# What is EIT ICT Labs Master School?



- Master's Programme, 120 ECTS, two years
- Compulsory mobility between two universities
- Graduates receive double degree (MSc degree from each university)
- 7 technical majors + Innovation & Entrepreneurship Minor
- Cooperation of 19 top technical and business universities in Europe
- Launched in 2012



# Which universities are involved?

- In addition:
  - Institut Télécom, France
  - Saarland Universität, Germany
  - TU Darmstadt, Germany
  - University of Nice, Sophia Antipolis, France
  - University of Turku / Åbo Akademi University, Finland
  - Université Pierre et Marie Curie, France



# What are the technical majors?



## Green ones are offered at Aalto University

### **Human Computer Interaction and Design (HCID)**

- design, development and evaluation of novel user interfaces and interactive systems

### **Digital Media Technology (DMT)**

- generation, processing and coding of media as well as transfer and storage of media content

### **Service Design and Engineering (SDE)**

- digital, software intensive services based on service-oriented architectures

### **Internet Technology and Architecture (ITA)**

- advanced networking technologies and architectures for distributed computer systems and networks

### **Distributed Systems and Services (DSS/Cloud Computing)**

- scalable and reliable distributed systems and services

### **Security and Privacy (SaP)**

- computer systems, capable of ensuring security, integrity and privacy.

### **Embedded Systems (ES)**

- electronic and software components for a wide variety of personal and industrial devices

# So exactly, what is offered and where? (1 = entry, 2 = exit)



University	DMT	DSS (CC)	ES	HCID	ITA	S&P	SDE
Aalto	1 + 2	1 + 2	2	1 + 2			1 + 2
BME Budapest	2						
TU Eindhoven			1 + 2				1 + 2
ELTE Budapest						2	1 + 2
Inst. Télécom					2		
KTH	1 + 2	2	1 + 2	1 + 2	1 + 2		
Saarland Uni.						2	
TU Berlin		1 + 2	1 + 2	2	1 + 2	1 + 2	
TU Darmstadt						2	
TU Delft	1 + 2						
UPS Paris		2		1 + 2			
UCL London	2			2			
University of Nice, S.A.					2		
Uni Rennes 1		1 + 2					
Uni Turku/ Åbo Akademi Uni			2				
Uni Twente				2		2	
Uni Trento	2		2	2	1 + 2	1 + 2	1 + 2
Uni Pierre & Marie Curie					1 + 2		



Aalto University  
School of Science

Digital Media  
Technology  
(DMT)

Distributed  
Systems and  
Services  
(DSS)

Embedded  
Systems (ES)

Human Computer  
Interaction and  
Design (HCID)

Service Design  
and Engineering  
(SDE)



**Innovation & Entrepreneurship Minor**

# The whole package!



**Entry university**

**Courses in major  
36 ECTS**

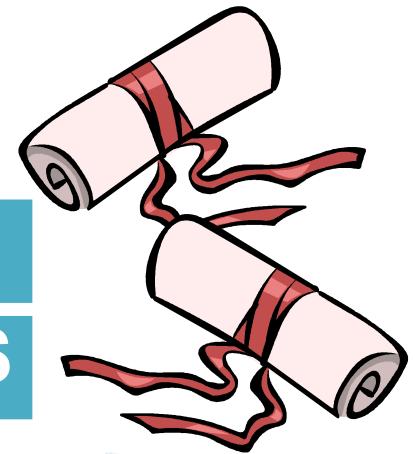
**Courses in I&E minor  
24 ECTS**

**Summer School**

**Kick-off**

**120**

**ECTS**



**Exit university**

**Courses in major  
24 ECTS**

**I&E minor thesis  
6 ECTS**

**Master's thesis  
30 ECTS**

**Internship**





What does it  
cost?

What are the  
admission  
criteria?

When  
can I  
apply?



# Admission criteria



- **Bachelor's degree** (min. 180 ECTS credits) from an internationally recognized university. Students on their final year of BSc studies can apply if they will graduate by 31 July 2015 (\*).
  - Each major has specific requirements for the content of the BSc degree, but generally, it should be in the field of Computer Science/ICT.
- **Good command of English.**
  - Generally, English proficiency is proved with an internationally recognized test (TOEFL, IELTS etc.)
  - **Additional tests and exemptions of the general requirements may be accepted at each entry university**, so pick your first preference entry university carefully and check the language criteria carefully too.
  - Please note that if you do not fulfil the general language requirements, this may also have implications on your eligibility for some of the exit universities.

# Admission schedule



- Admission 2015
  - Main application period November-January (exact dates to be announced)
- Second application period for admission 2015 will have two application deadlines
  - 1st April for entry points at Aalto, KTH, or Dutch universities
    - Results in early May
  - 30th May for entry points and all exit points
    - Results in early July



# Scholarships and fees



- For **EU/EEA and Swiss students**, there are two scholarship categories
  - **Standard scholarship**
    - No tuition fees
    - Travel & installation support of up to 3000€ at the beginning of studies
    - Master School activities: kick-off, summer schools etc.
  - **Excellence scholarship**
    - No tuition fees
    - Travel & installation support of up to 3000€ at the beginning of studies
    - Master School activities: kick-off, summer schools etc.
    - **Monthly allowance of 500 EUR.**



# Scholarships and fees



- For **other students**, the tuition fee is 8 000 EUR/year.
  - All costs related to Master School activities (kick-off, summer schools etc.) are included in the fee.
- There are two kinds of scholarships available
  - **Standard scholarship**
    - No tuition fees
    - Travel & installation support of up to 3000€ at the beginning of studies
    - Master School activities: kick-off, summer schools etc.
  - **Excellence scholarship**
    - No tuition fees
    - Travel & installation support of up to 3000€ at the beginning of studies
    - Master School activities: kick-off, summer schools etc.
    - **Monthly allowance of 1000 EUR.**

The background of the slide is a blue-tinted photograph of two hands holding puzzle pieces. The hands are positioned as if they are about to connect the pieces. The puzzle pieces are dark and have a textured surface. The overall image conveys a sense of collaboration and problem-solving.

# More information?

[www.masterschool.eitictlabs.eu](http://www.masterschool.eitictlabs.eu)