

---

# Simulation Model of the Intelligent Network's Node

---

**Irina Buzyukova**  
Bonch-Bruевич State University of  
Telecommunications

St. Petersburg, 2010

---

# Introduction

## **Goal:**

- calculate delays which occur during call establishment process for IN services

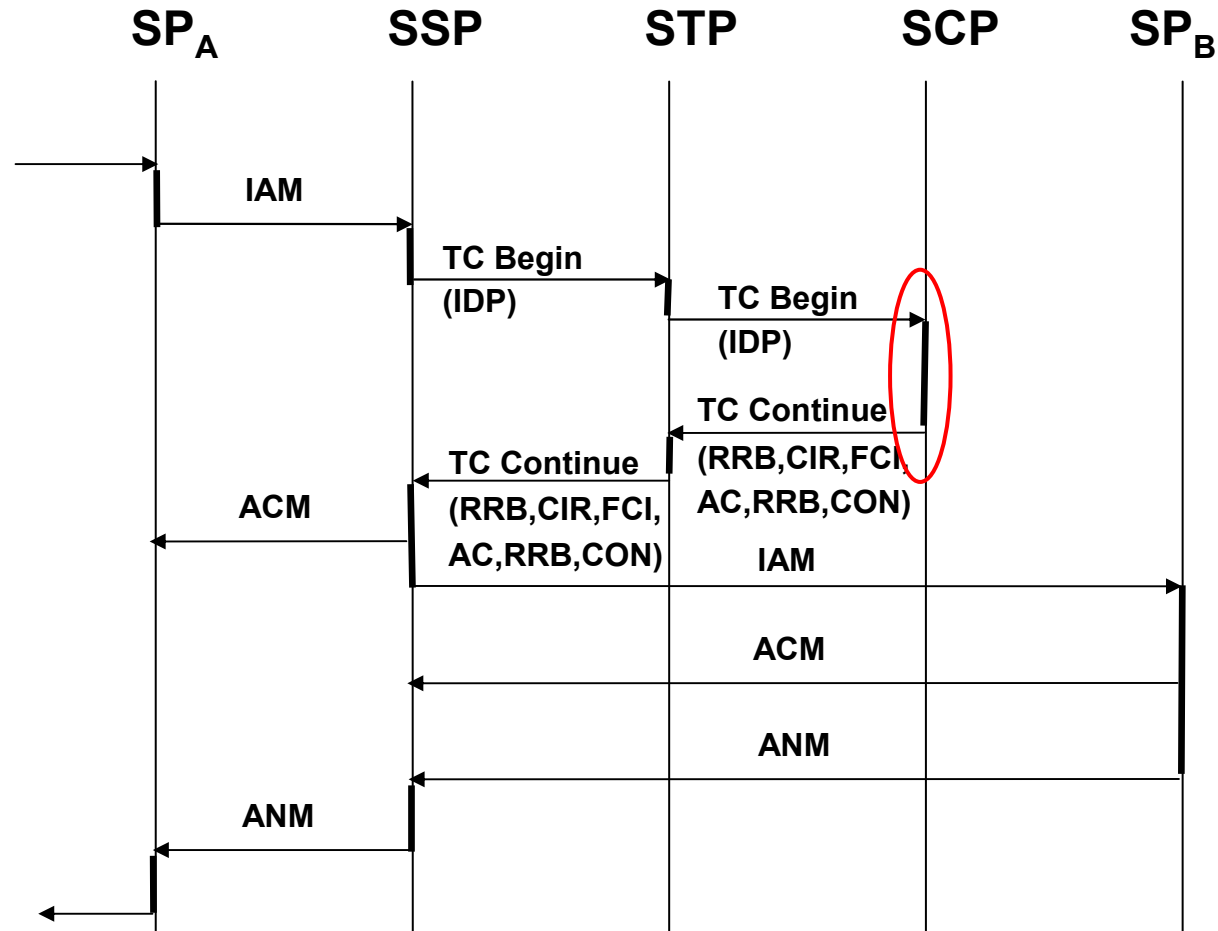
## **Tasks:**

- create simulation model of message-processing in IN nodes
- compare analytical and simulation results

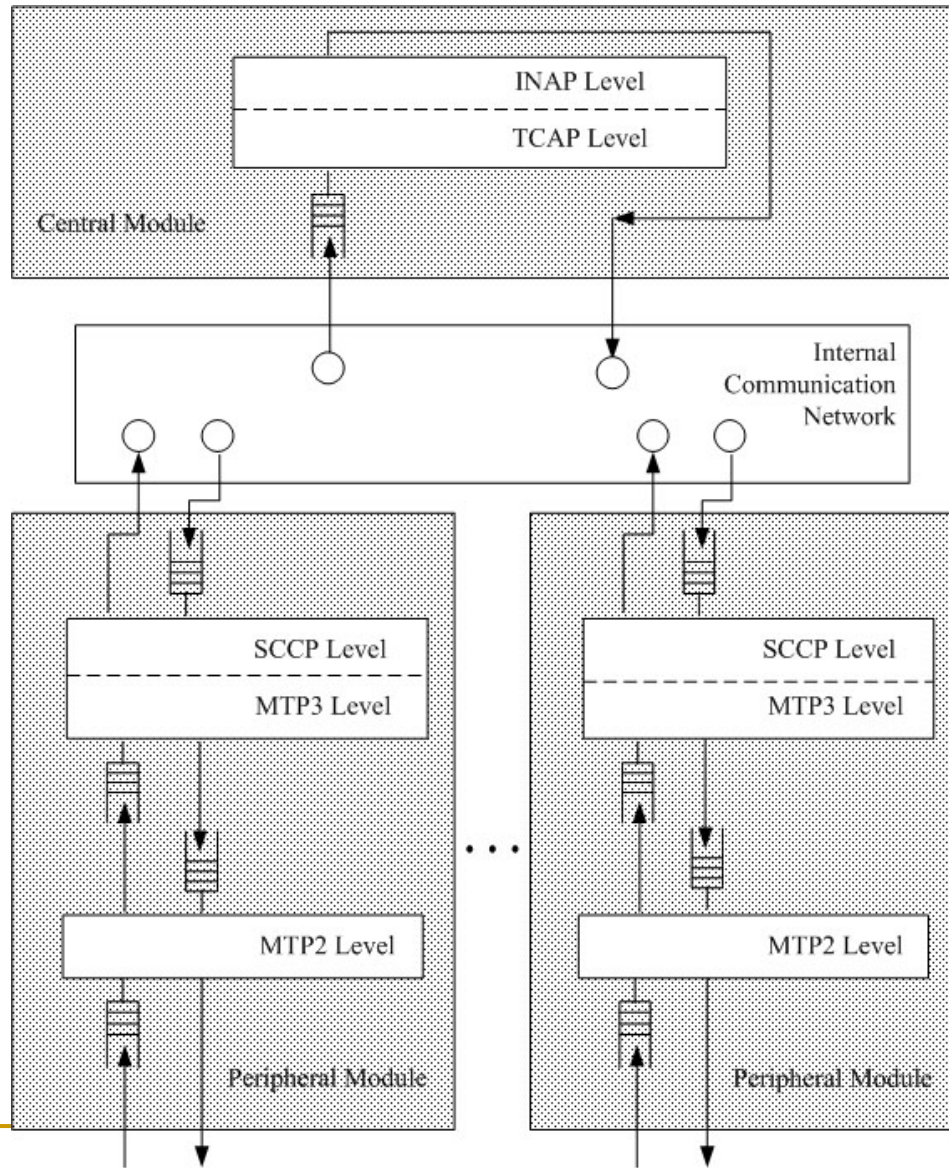
Simulation environment: GPSS World Student Version

---

# IN Call establishment process



# Functional model of IN node

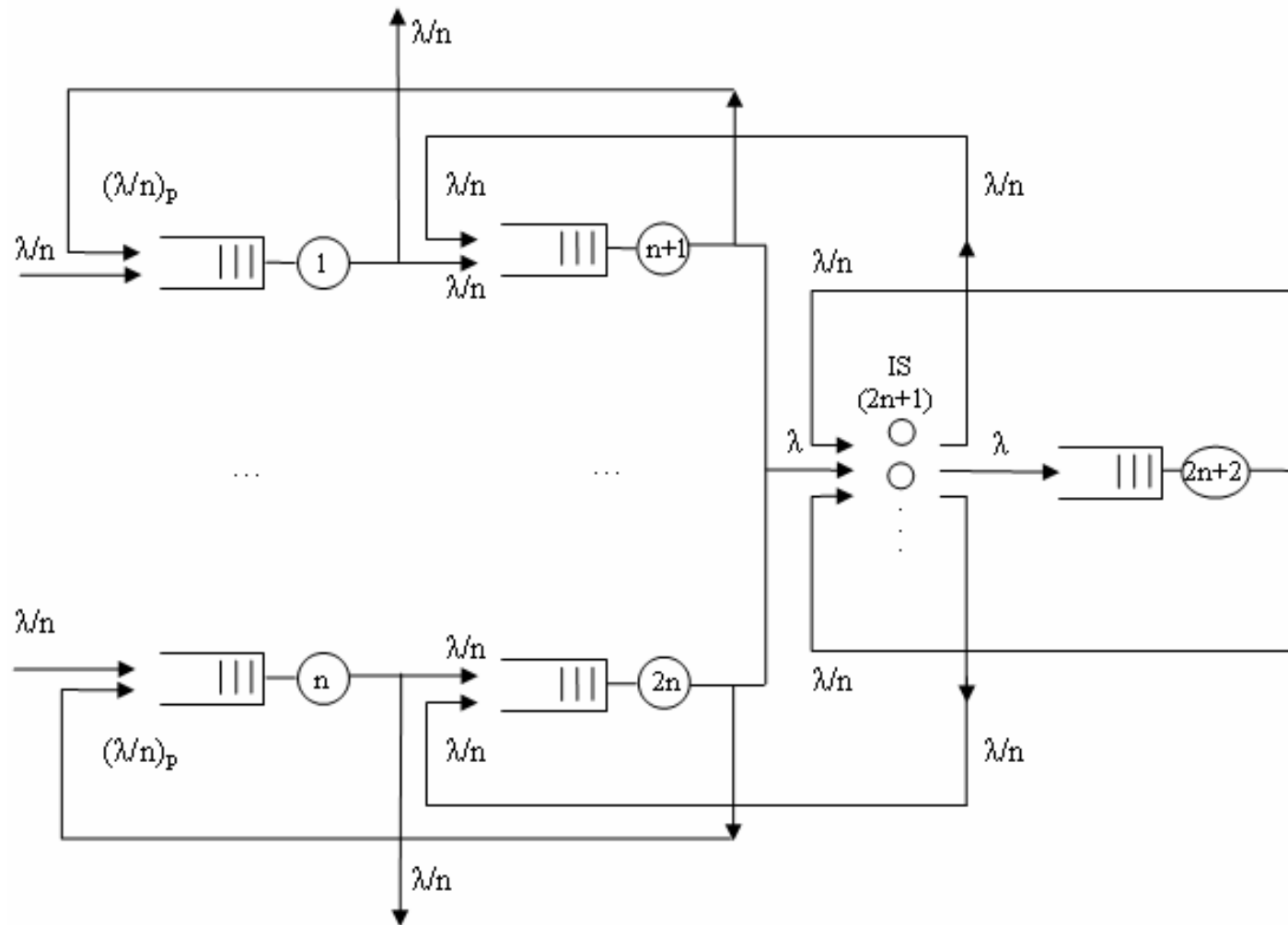


ISM - Invocation state machine  
 CC - Component coordinator  
 DH - Dialogue handling  
 TSL - Transaction sub-layer

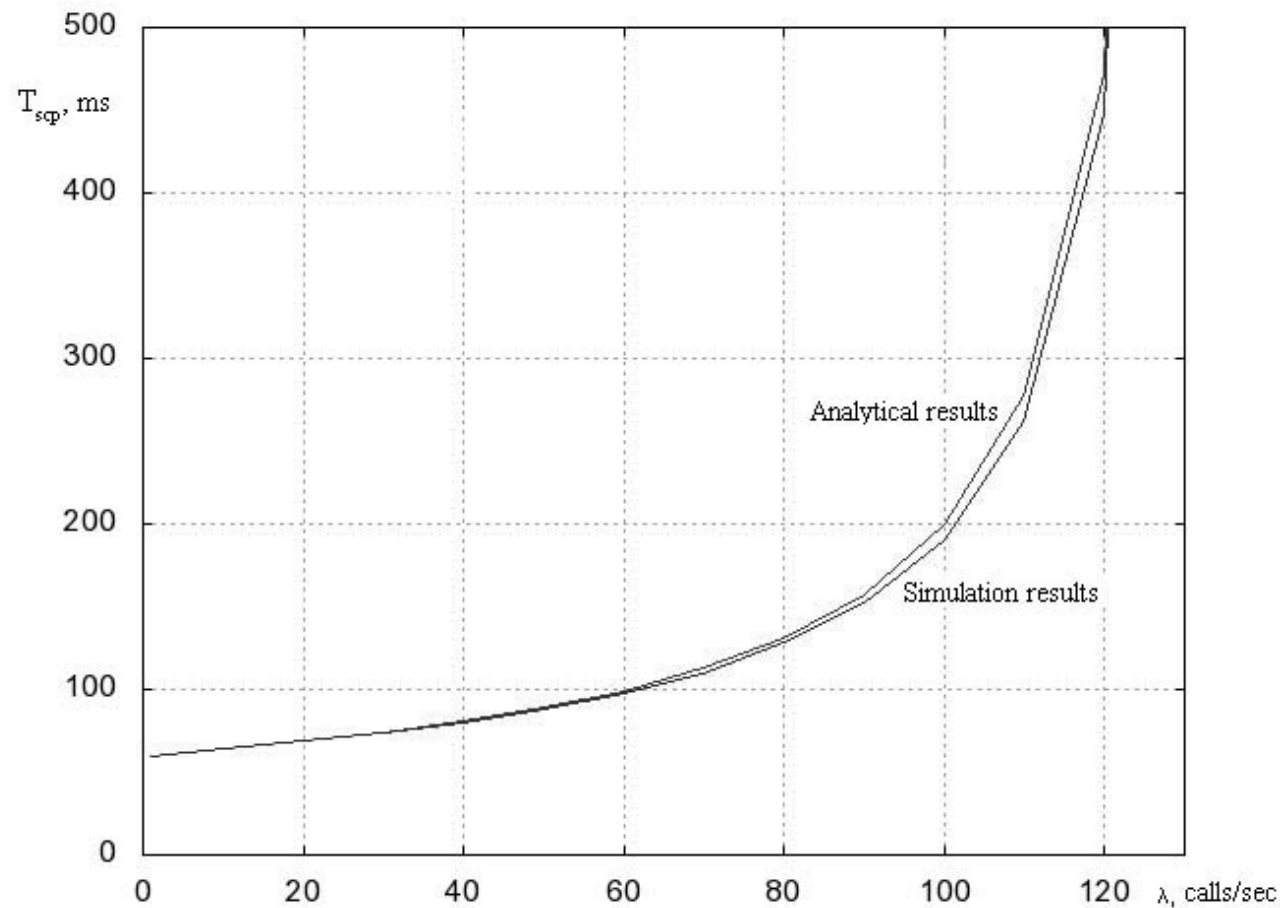
CL - Connectionless transfer control  
 RT - Routing control

RT - Message routing  
 DC - Message discrimination  
 DT - Message distribution

# Open queuing network (IN node)



# Mean time for processing of signaling message in IN node



# Absolute/relative errors

$\lambda$ , calls/sec	$T_{SCP}$ , sec (analytical)	$T_{SCP}$ , c (simulation)	Absolute errors ( $\alpha$ )	Relative errors ( $\delta$ )
1	0,060	0,060	0	0
10	0,064	0,064	0	0
20	0,069	0,069	0	0
30	0,074	0,074	0	0
40	0,081	0,080	0,001	0,01
50	0,089	0,088	0,001	0,01
60	0,099	0,098	0,001	0,01
70	0,113	0,110	0,003	0,02
80	0,131	0,128	0,003	0,02
90	0,157	0,152	0,005	0,04
100	0,200	0,191	0,009	0,04
110	0,277	0,262	0,015	0,06
120	0,471	0,448	0,023	0,05
130	1,822	1,753	0,069	0,04

---

## Conclusion

- Analytical results – upper threshold for signaling message processing time
  - relative errors do not exceed 5%  
(max arrival rate – 100 calls/sec)
  - Mean delay value in the SCP node  
→ 60 - 200 ms
  - Mean call-processing time in IN node for busy hour (10 calls/sec), IN Service – Universal Access Number  
→ 64 ms
-





**Thank you!**

