



# Modeling and Analysis of the Session Initiation Protocol

Emil Ishmukhametov, Maxim  
Gerasimov

Yaroslavl State University



# Session Initiation Protocol (SIP)

- SIP is developed by the Internet Engineering Task Force (IETF) and published as Request for Comments (RFC) 3261 in 2002
- SIP is used for initiating, modifying and terminating multimedia sessions over the Internet
- SIP has been recognised as a signaling protocol of the IP Multimedia Subsystem
- SIP is a protocol for VoIP applications



# SIP principles

- Personal mobility of users
- Scalability of a network
- Expansibility of the protocol
- Integration into a stack of existing protocols of the Internet
- Interaction with other signaling protocols (H.323)

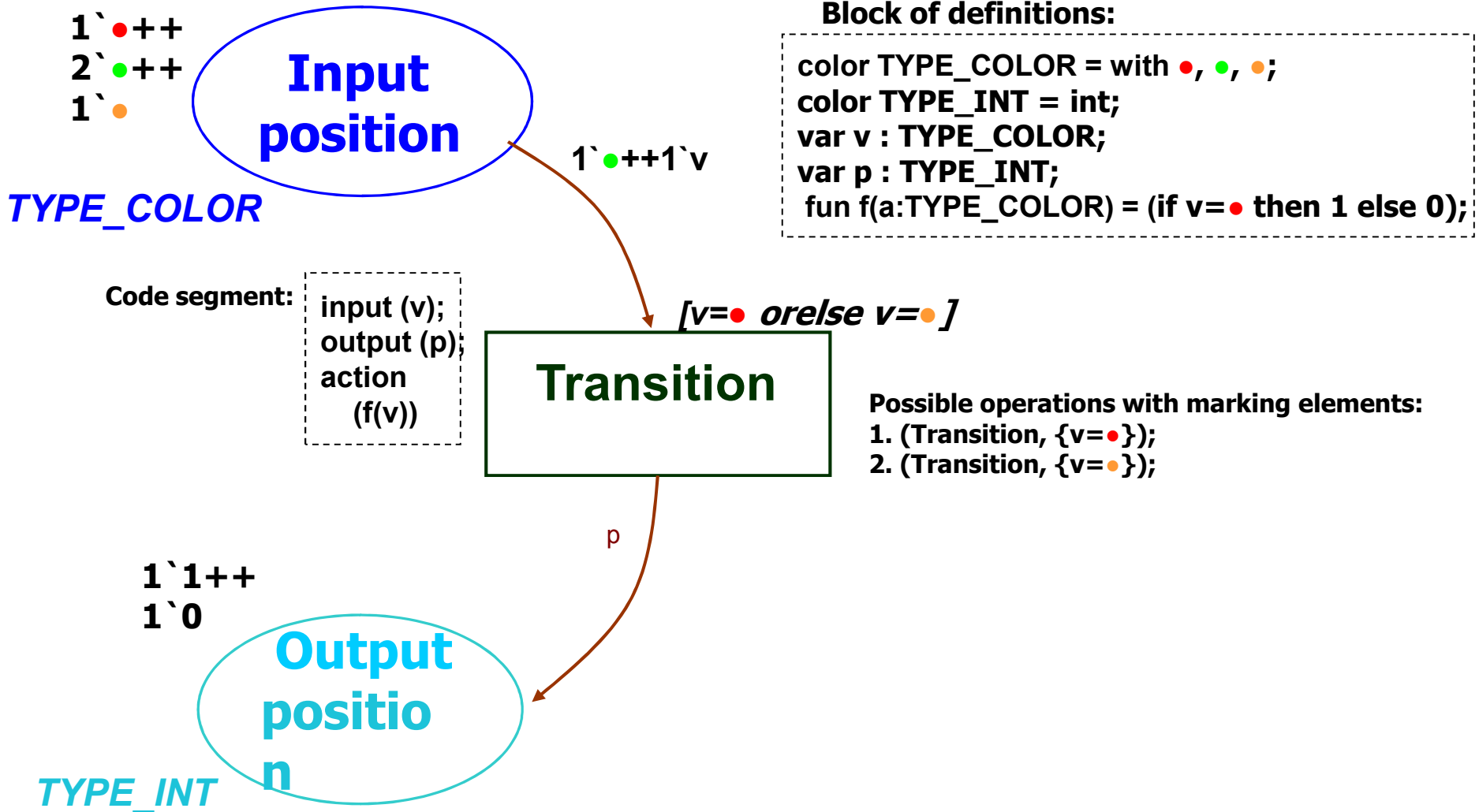


# Requests

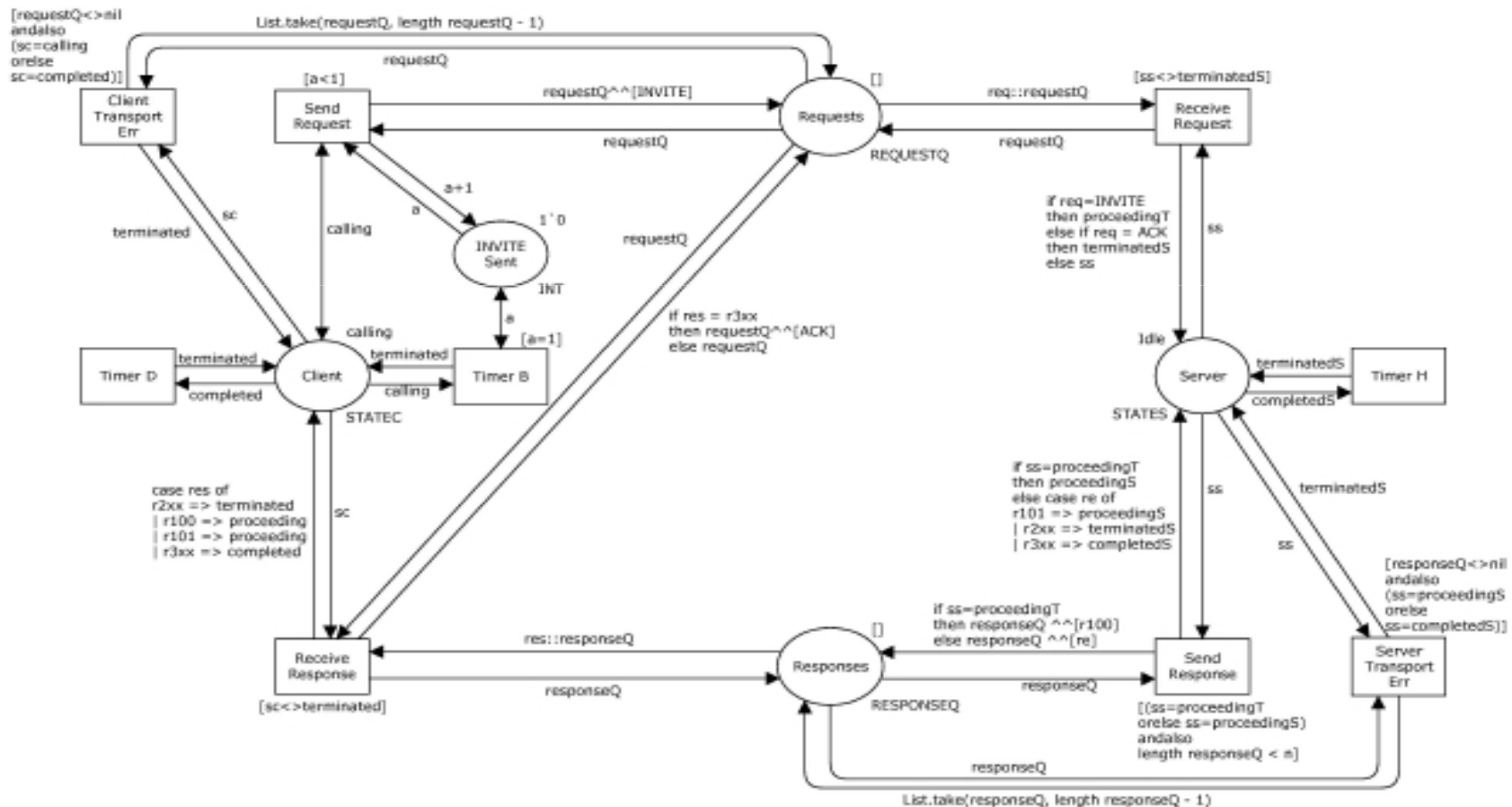
- **INVITE \***
  - **BYE**
  - **ACK**
  - **CANCEL**
  - **REGISTER**
  - **OPTION**
- } **Have been modeled**

\* using work of Lay G. Ding and Lin Liu “Modelling and Analysis of the INVITE Transaction of the Session Initiation Protocol Using Coloured Petri Nets”

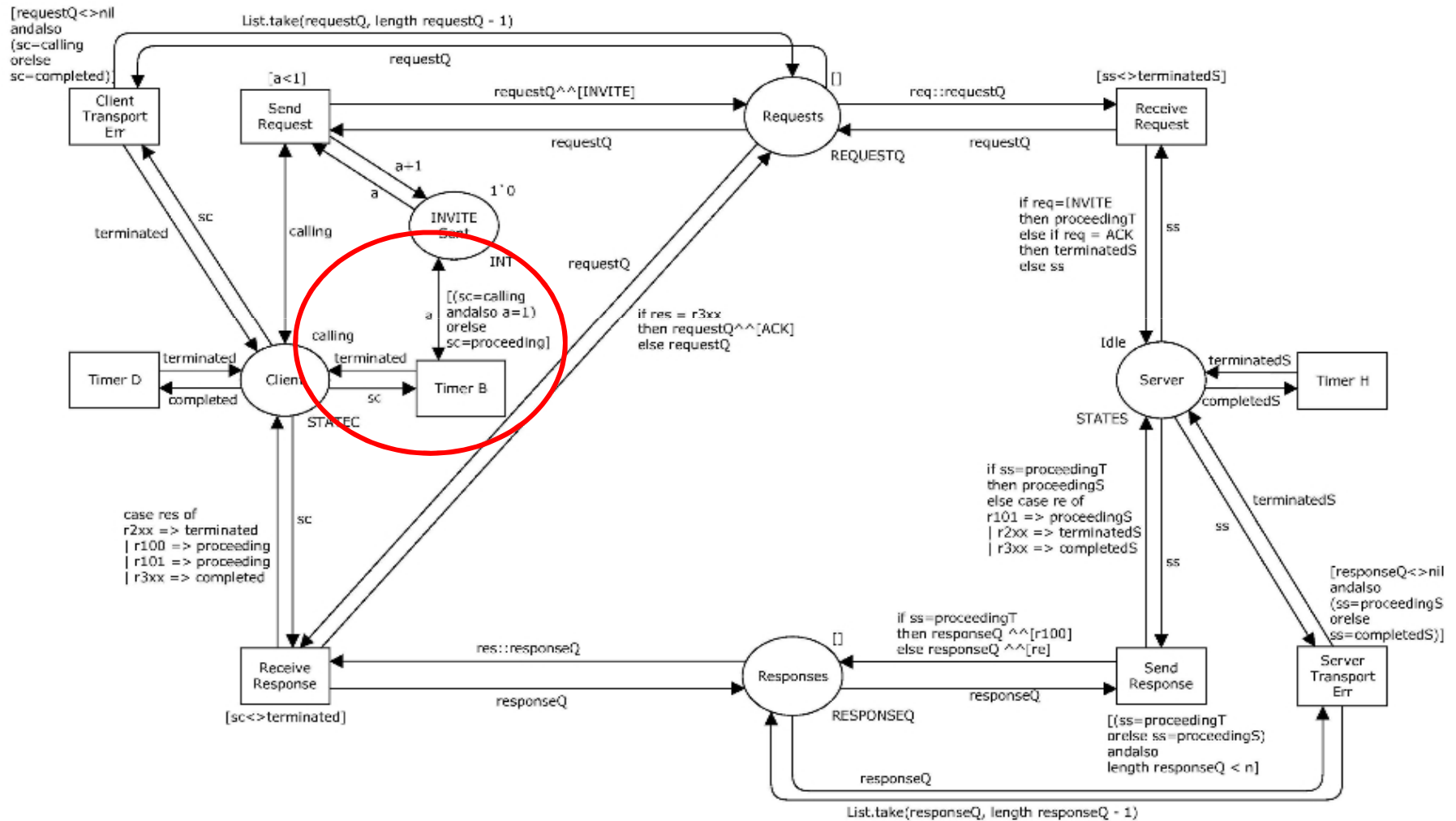
# Coloured Petri Nets



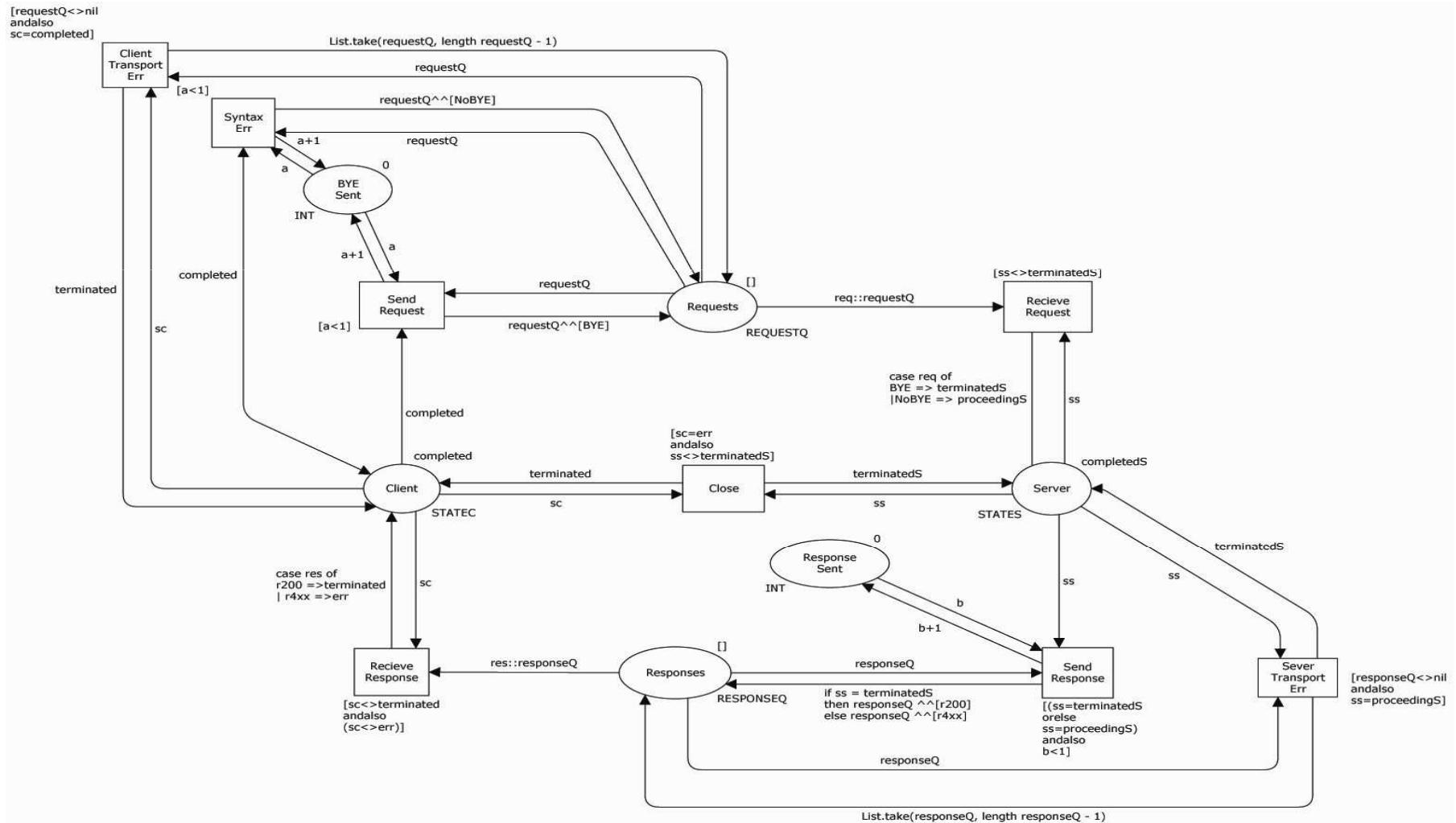
# Modelling of the SIP INVITE Transaction



# Analysis and modification



# Modelling of the SIP BYE Transaction







# Future work

- To model all transactions of SIP
- To verify protocol and make modifications
- To do a model of SIP for unreliable transport medium



**Thank for your attention!**